

ARMY RESERVE: A LIFE-SAVING AND LIFE-SUSTAINING FORCE FOR THE NATION

THE ARMY RESERVE PROVIDES TRAINED, EQUIPPED AND READY SOLDIERS, LEADERS, AND UNITS TO MEET AMERICA'S REQUIREMENTS AT HOME AND ABROAD.

MEDICAL

SPECIALTIES: Combat Support Hospitals, Specialized Medical Teams, Veterinary Services

SHARE OF TOTAL FORCE: 60%

Abroad: Provide life-saving medical care and sustaining healthcare to U.S. Soldiers and civilians

At Home: Organize medical/dental clinics in low-income communities to train and serve



TRANSPORTATION

SPECIALTIES: Light, Medium, and Heavy Trucks, Watercraft

SHARE OF TOTAL FORCE: 40%

Abroad: Provide all critical transport capabilities during overseas deployments

At Home: Deliver emergency supplies and transport responders to flood-affected domestic regions



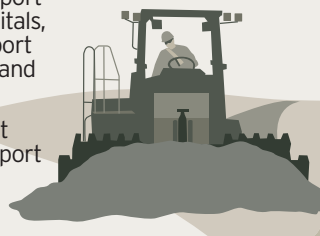
ENGINEERING

SPECIALTIES: Search and Rescue, Debris Removal, Road and Building Construction, Portable Bridges

SHARE OF TOTAL FORCE: 35%

Abroad: Build transport infrastructure, hospitals, and schools to support military operations and aid civilians

At Home: Construct new airstrips to support next-generation combat aircraft



SUSTAINMENT/QUARTERMASTER

SPECIALTIES: Water, Petroleum, Generators, Food, Shelter

SHARE OF TOTAL FORCE: 66%

Abroad: Manage supply logistics at airbases, ports, and deployment zones

At Home: Mobilize water pumping units to assist disaster victims



AVIATION

SPECIALTIES: Medical Evacuation, Medium and Heavy Lift Helicopters, Search and Rescue

CONTRIBUTION TO TOTAL FORCE: Medium-lift helicopters and fixed-wing aircraft

Abroad: Contribute aerial assault, medical evacuation, and troop transportation capabilities

At Home: Provide aerial response to forest fires and emergencies



CIVIL AFFAIRS

SPECIALTIES: Humanitarian Assistance, Resource Control, and Support to Local Governments

SHARE OF TOTAL FORCE: 90%

Abroad: Design innovative counter-insurgency training courses for allied forces

At Home: Conduct disaster damage assessments



THE ARMY RESERVE PROVIDES 65% OF THE ARMY'S TOTAL LOGISTICS UNITS, THE MAJORITY OF WHICH ARE "CRITICAL DUAL-USE" SUPPORTING COMBAT OPERATIONS AND PEACETIME MISSIONS.

